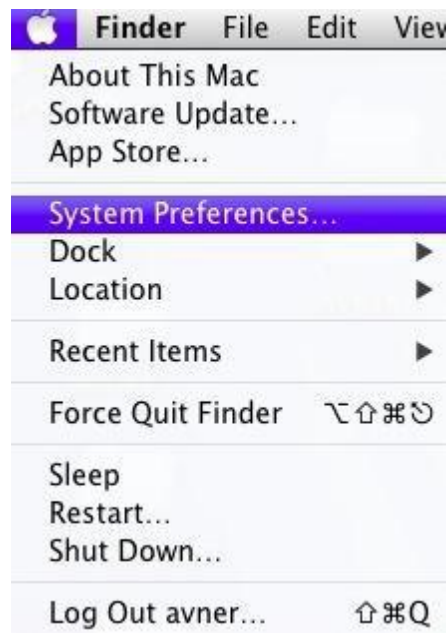
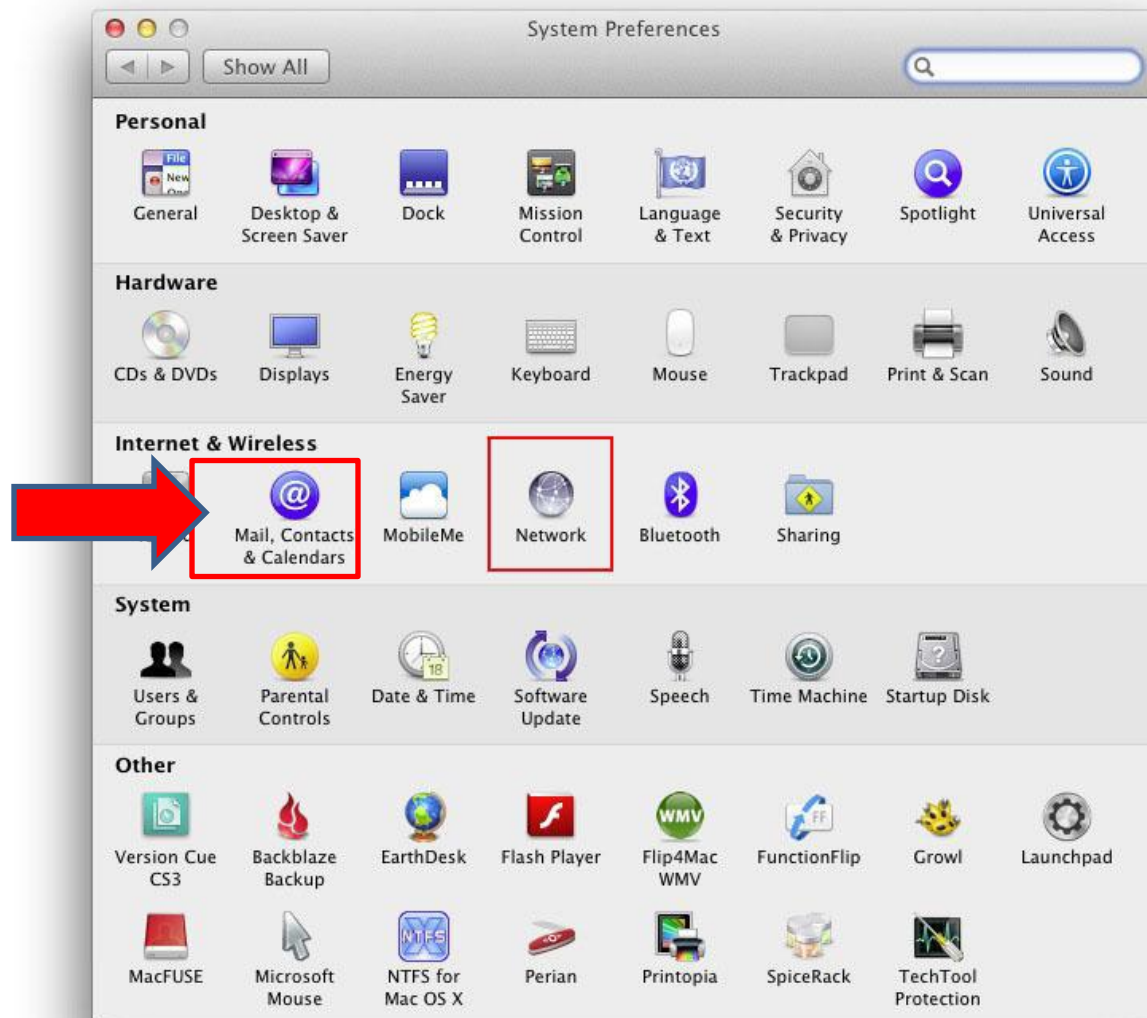


## Directions for defining PROXY in MAC

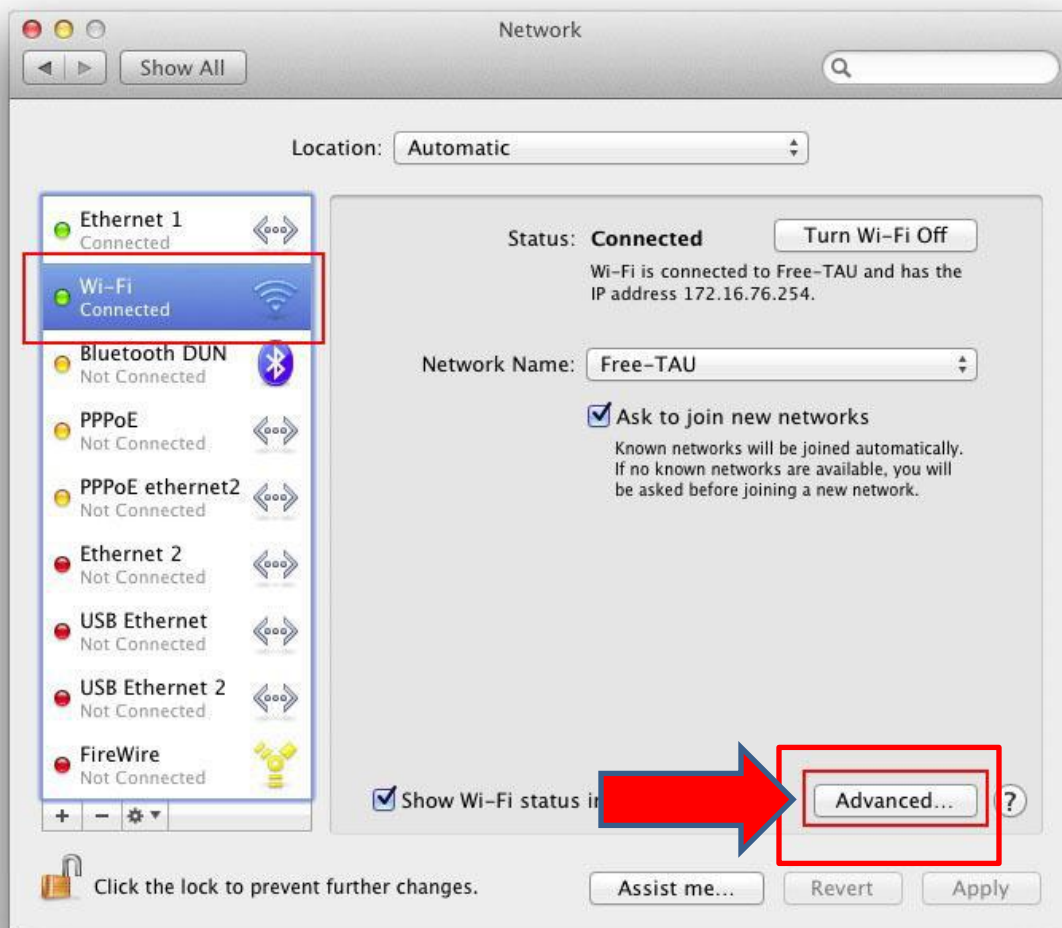
Under the Apple menu, choose **"System Preferences"**.



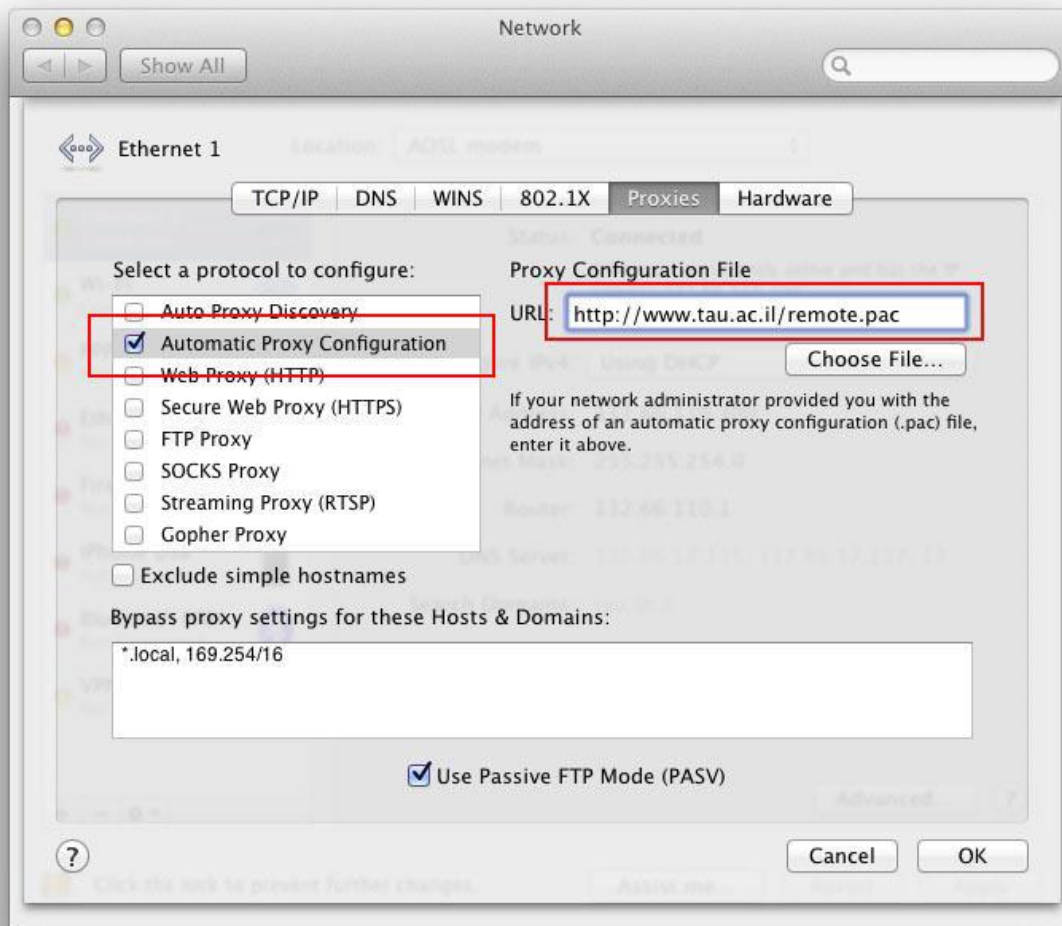
Then, click "Network"



Choose your network service (Wi-Fi or Airport), or Ethernet (if you are connected through a router), and then click "**Advanced**"



Under Proxies, select “**Automatic Proxy Configuration**” and type this address: **<http://www.tau.ac.il/remote.pac>**



Click "**Ok**". You'll have to log-in with your TAU credentials once you'll reach the proxy-content.

In case these instructions do not properly work, go to <http://rproxy.tau.ac.il>